

RA

RA Series Aluminum Electro

Feature

- * : 105 10000
Load life:105 10000 hours.
- *
High ripple current, extreme long
- * RoHS
Compliant to the RoHS Directive

Application

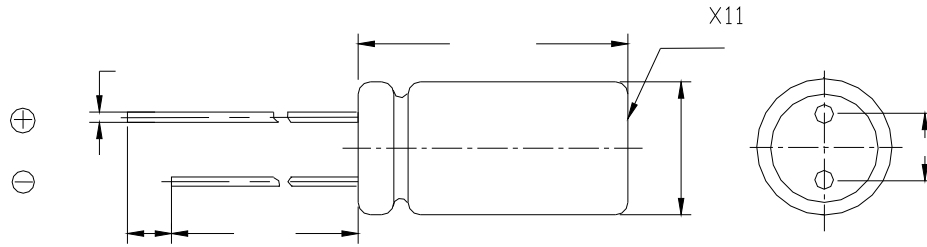
- * LED
Ideally designed for all kinds of

Part Number

8 2 2 0 L F

Code	Voltage
LO	4
LA	6.3
LB	10
LC	16
LD	25
LE	35
LF	50
LG	63
MA	100



Product Structure


(mm)	±0.5			±1.0				
D(mm)	5	6.3	8	10	12.5	16	18	22
F±0.5(mm)	2.	2.5	3.5	5.0		7.5		10.0
d±0.1(mm)	0.5		0.6			0.8		
L(mm)	11,12	12,16	12,16,	16,20,25	16,20,25,30,35	20,25,30,35,40	25,30,35,40	
	L±2.0							

Main specifications

Item	Performance Characteristics	
Rated Voltage Range	160~450V.DC	
Operating Temperature Range	-25 ~+105	
Nominal Capacitance Range	1~220 F	
Capacitance Tolerance	±20% M +25 120Hz	
Leakage Current (25)	(V) Rated working voltage	160~450
	Leakage current	2 I 0.03CV+25(A) After 2 min. I 0.03CV+25(A)
C μF Nominal Capacitance in μF V V Rated working voltage in V		
DF Dissipation Factor	(V) Rated working voltage	160~450
	DF(MAX) (25 ,120Hz)	0.15
1000μF 1000μF DF 0.02 For capacitance of more than 1000μF,add 0.02 for every increase of 1000μF.		

Surge Voltage	(V) Rated working voltage	160	200	250	350	400	450
	(V) Surge voltage	200	250	300	400	450	500
Temperature Stability	(V) Rated working voltage	160~250		350~450			
	(120Hz) Impedance Ratio	z-25 /z+25		3		6	

+105

10000

After application of rated working voltage with max permissible ripple current specified at +105 for 10000hours, capacitors meet the characteristics requirements measured at +20 listed at below:

Load life

1

:±25

Dimensions and ripple current

WV/V Cap/ μ F	160		200		250		350		400		450	
	(1)	(2)	(1)	(2)	(1)	(2)	(1)	(2)	(1)	(2)	(1)	(2)
1.0									8x12 10x12	40 50	8x12	72
1.5									8x12 8x16	50 60	8x14	85
1.8									8x12 10x12	60 70	8x12	90
2.2					8x10	80	8x10	78	8x16 10x12	80 80	10x12	130
2.8					8x12	90	8x12	90	8x16	90	10x16	150
3.3					8x12	100	8x12	100	8x16 10x16	80 100	10x16	160
4.0					8x12	120	8x12	120	10x20	150	8x16 10x16	128 220
4.7					6.3x12 8x12	140 100	8x12	130	8x12 10x16	90 110	10x12 10x16,20	180 200
6.8					8x12 10x16	150 180	10x16	220	10x16 10x20	220 220	10x14 10x20	220 250
8.2	8x12	110	8x16	230	8x16	150	10x16	250	10x20	250	10x20	250
10	6.3x9 8x12	230 250	8x12 10x16	180 250	8x16 10x12	230 230	10x20	280	10x20 12.5x20	280 280	10x20 12.5x20	300 300
15	8x16	250	10x16	280	10x16 12.5x20	250 450	10x20	300	10x16 10x20	250 290	12.5x20	300
22	10x20	500	10x20	500	10x20 12.5x20	480 600	12					

Packaging

*

Taped packaging quantity

D	Qty. (Pcs)	L() 22mm	L()
---	------------	-----------	------